



## Swirled Placemats

featuring the Lil' Twister®  
Ruler

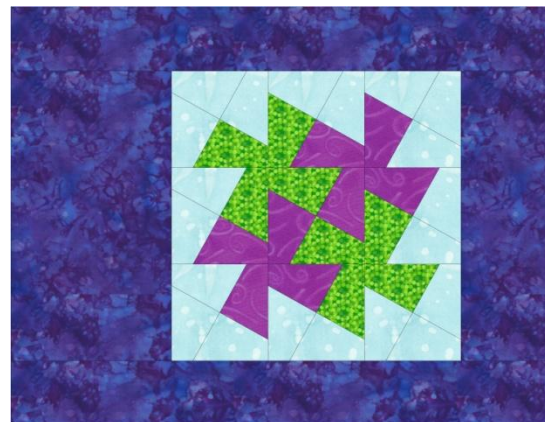


a pattern from

True Blue *Quilts*



## Swirled Placemats



a pattern by True Blue Quilts

### Fabric for a set of 4

Main prints	2 fat quarters or 5"xWOF of each
Background	1/2 yd
Border	2/3 yd
Batting	1 yd
Backing	1 yd

### Step 1 - Assemble center twister blocks

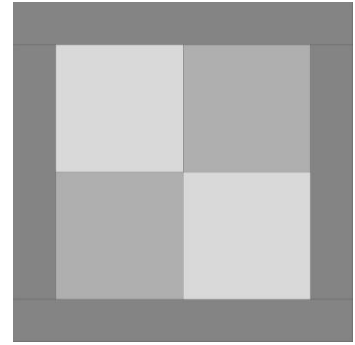
Cut 16 5" squares from the main prints. Ombre fabrics or scraps work well in this design.

Sew a 4 patch from charm squares of the main prints.

Cut six 3" strips from the background fabric.

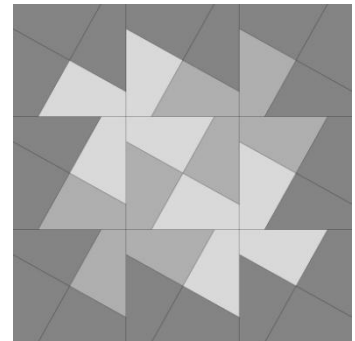
Subcut into 8 strips at 3" x 9-1/2" and 8 strips at 3" x 15".

Frame the four patch unit with the border strips.



Place the Lil Twister® ruler on the seam lines and cut the twister units.

Sew these units together as a 9-patch to make the central design of your placemats.



### Step 2 - Bring the placemat to desired size (12" x 17").

Cut 5 strips at 5", then subcut into strips.

4 at 5" x 12-1/2"

4 at 3-1/2" x 12-1/2"

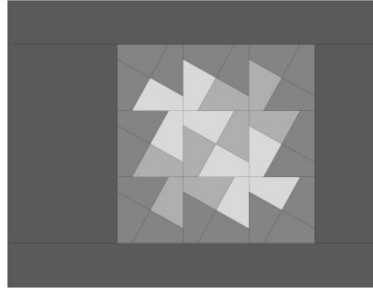
8 at 2" x 9-1/2".

The 2" x 9-1/2" strips will be used for top and bottom borders.



**Step 2 continued**

Use the 5" and 3-1/2" strips for left and right borders.

**Step 3 - Finishing**

Quilt and bind as desired. Facing works well for placemats instead of traditional quilt binding.

To face your placemats, cut batting and backing the same size at the top.

Layer the backing right side up, top right side down and then batting. Pin the layers together, then sew a 1/4" seam on all sides, leaving an opening about 3 inches long. Turn the placemat right side out, with the batting to the inside. Ensure the corners are square, then hand-stitch the seam. Quilt as desired through all layers.